



# SAGTA Members' Newsletter

## Chair's Chirp

Well, the meteorological start of winter is behind us, the solstice has been, and hopefully we approach the warmer part of the year soon.

The Western Cape has certainly been in the news, receiving huge amounts of rain. Rain that has replenished the dams, and hopefully yields wonderful growth in the fields and orchards come spring.

Much work has been going on behind the scenes at SAGTA and we know that this too is going to yield more growth and benefit our wonderful association (see page 2).

We have a bus full of eager tourists confirmed for departure, at the end of September, on our Mpumalanga conference. The itinerary has been finalised and I thank the tour committee for the hours they have spent preparing for this tour. It is sure to be full of facts, fun, flowers and feldspars.

The map downloader is being moved behind our paywall, and will be a members only tool on the whole, with trial maps only going to be allowed to be generated twice a year. We need to ensure that this benefit remains, and given the costs of maintenance, currently very kindly sponsored by Kartoza for 2023, we needed to make the move to disable the 'lite' version after two prints. We implore members to not share passwords and login details with colleagues and friends, but to rather encourage them to become members of SAGTA. After all, for the cost of a cappuccino a month, and given the benefits of SAGTA membership, it can hardly be considered expensive.

Watch this space for details of a planned tour to Hawaii to attend the AAG 2024 conference in Honolulu. We are planning on attending this once in a lifetime destination as a 'Party of Geographers'.

To the members of 4 term schools, I wish you every success for the term about to start, and to teachers in the 3 term system, strength for the midyear exams, and may your upcoming break be wonderful.

Warm regards

Bobby Warriner

### Inside this issue

Membership changes .....	2
Where do our members reside?..	3
Obituary –Henning Pieters.....	4
A tribute—Chris Thorpe .....	6
AI—CHATGPT Webinar.....	7
Webinar review: Do look up!.....	8
JoGEA News.....	10
GDSC News.....	11
How to download a topographic map using the Map Downloader .....	12-13
Conference News.....	14

### Special points of interest

- Membership changes .....
- AI GPT CHAT webinar.....
- Update on the Geospatial Data Science Certificate (GDSC) ....



## Membership changes: 2023 –2024

As you are aware, we are busy phasing out all two-year memberships and from next year there will only be an annual membership available.

As of 1 July this year any membership falling due between July and December, the member will pay 50% of the annual subscription (R200), and will have to renew their annual membership by the end of January 2024, with the rest of the membership.

All members will receive a first notification of renewal of annual subs at the end of November and again at the beginning of January. Renewals are due by 31 January 2024. Thereafter the membership will lapse.

All notices about renewal will also be automated.

---

*Where was this photograph (above) taken? To earn Provincial membership points, submit your answer on the google link: <https://forms.gle/K9Ei66abCag3rVX1A>*

---

### Conference Attendance Survey

Originally we did a survey at the SAGTA BERG to BEACH conference in 2021, to see who has attended the most Geography Conferences. We are extending that survey to all SAGTA members and also teachers who are on the South African Geography Teachers Google group emailing list, or anyone you may know who has attended one or more of these field conferences. We are looking for the Geography Teacher who has attended the most ISASA and SAGTA conferences! Our records go back until 1992, and if you include the upcoming Mpumalanga Conference, the most conferences attended will be 17!

The link to the google form is below:

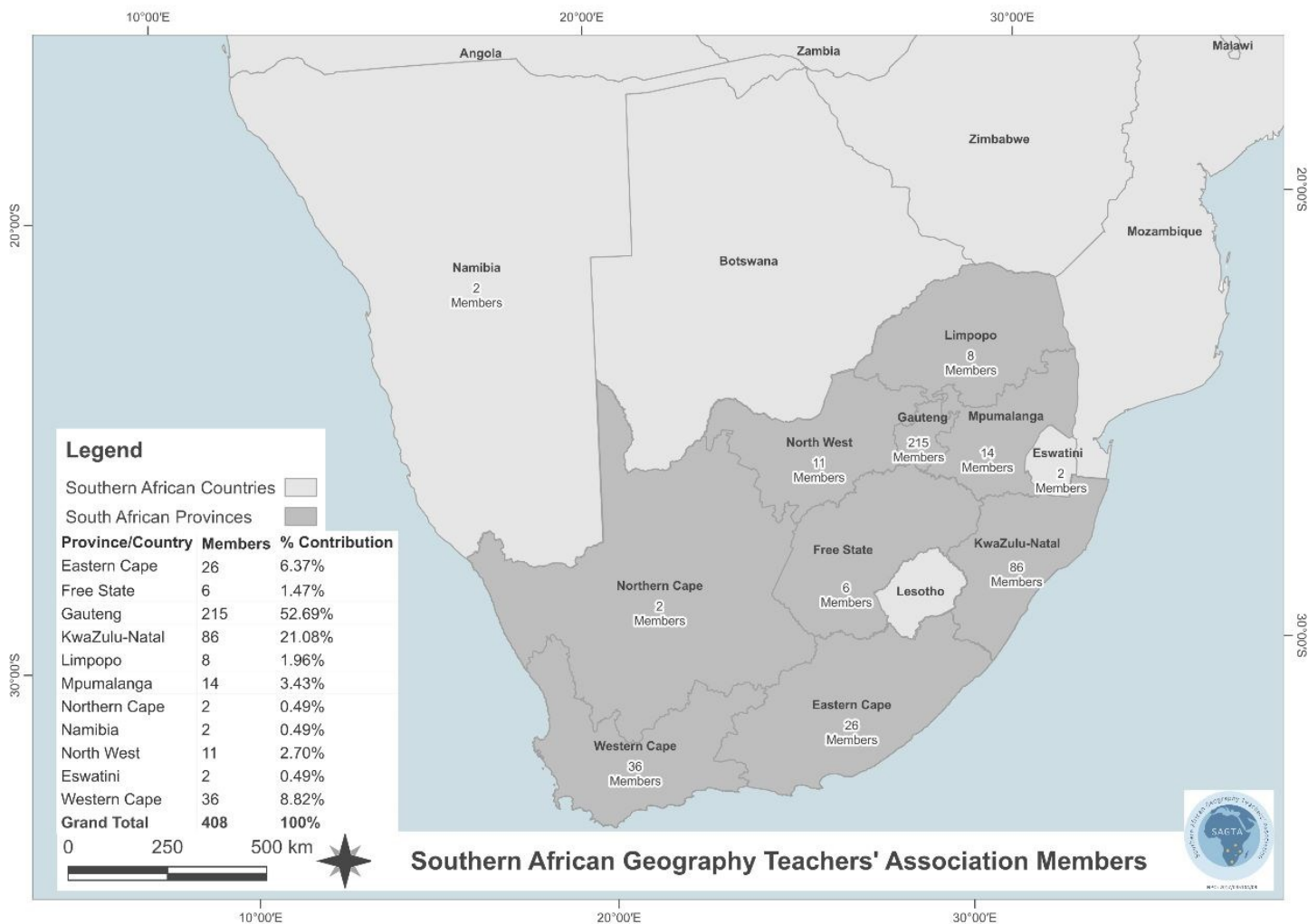
<https://forms.gle/RXRL6PJdth6uqfax8>

## Map Downloader 31 July 2023

As of 31 July, the access to the Map Downloader Lite version will be restricted to TWO downloads per year. We would like to encourage more teachers to take out personal membership so that they can benefit from the resources that SAGTA has to offer. A large portion of the membership fees is used for the service and development of Map Downloader functionality and therefore we cannot penalize our members if there are so many free downloads.

*Should you at any time experience any difficulty with access to our website and the valuable resources found there, do contact our Help Desk using the following email address: [help@saqta.org.za](mailto:help@saqta.org.za)*

*or email the secretary as follows: [secretary@saqta.org.za](mailto:secretary@saqta.org.za)*



## Where do our members reside?

We asked Amanda Louw, the Secretary to assist with membership numbers. We would like to challenge members in the provinces to help us grow the provincial membership.

In this issue and the following issue there will be a few questions; quizzes and suggestions which would help your professional growth in each province.

Seabilwe Tidoli from Kartoza kindly mapped the membership for us, and we do challenge each member to make sure they are able to produce a map of southern Africa and to use a set of attribute information to insert on their map.

Your maps can be submitted to me for the next Newsletter by 30th August, 2023! Email: [paesterhuysen@gmail.com](mailto:paesterhuysen@gmail.com)

## Do you need help?

Not sure how to produce a map as shown above. Email Seabilwe Tidoli to arrange for a SAGTA-KARTOZA training session on how to use QGIS to produce a map of South Africa. There is a cost for these training webinars/sessions.

[seabilwe@kartoza.com](mailto:seabilwe@kartoza.com)

*Prof. Clinton van der Merwe and Pam Esterhuysen*

**GEOAWARENESS  
DAYS - 3rd Quarter  
2023**

**August**

1 Marine Protected  
Areas Day (MPA)

**September**

16 Coastal Clean-up  
Day  
16 World Ozone Day  
23 Spring Equinox  
29 Sept-3 October -  
SAGTA Mpumalanga  
Fieldwork  
Conference

**October**

1 SAGTA Rock  
Collection Day  
2 World Habitat Day  
5 World Teachers' Day  
28-29 Partial Lunar  
Eclipse (CT)  
28: starts 20:01  
29: ends 00:26

**Obituary  
IN LOVING MEMORY—MR HENNING PIETERS**

**15<sup>th</sup> February 1965 – 6<sup>th</sup> June 2023  
DBE INTERNAL MODERATOR: GEOGRAPHY**



Mr Henning Pieters, was a true Geographer of note. We got a sense that he ate, drank and slept Geography. His knowledge of Geography was phenomenal, and he was highly respected in his field. He was a life-long learner and loved to share his knowledge and passion for Geography with all who were interested.

He was a mentor, colleague, friend, and a team player who always expressed his point of view but also listened to and acknowledged others' opinions. He mentored many an 'up and coming Geographer'.

Henning thought out of the box and was instrumental in implementing many of the creative changes that took place in Grade 12 Geography. He was a perfectionist and had an excellent eye for detail. As the National Department of Basic Education Internal Moderator for Geography he was very dedicated and worked tirelessly beyond the required hours to ensure that he produced excellence.

Henning started out as a member of the DBE examining panel for Geography in 2007 when National papers were first written. In later years he became Chief Examiner and then Internal Moderator for Paper I and Paper II. He was also the team leader responsible for quality assuring the provincial trial papers and trained the provincial examiners for many years. His manual developed on exam setting for Geography is still used as a foundation and a teaching tool for all Geographers in South Africa, today.

## Mr Henning Pieters continued

As a materials designer he assisted in educating learners across the country. Despite ill-health, Henning continued to assist provinces with material for new sections in the curriculum.

Henning was a very humble person who led by example and this made him a great leader. He empowered and assisted many people academically, emotionally and financially. He always put others before himself.

He loved to travel and share his experiences. He was very proud of his country and his heritage as most of his travels were within South Africa.

Henning was a man of many talents. He was selected to represent his local choir in Poland. His dogs were part of his family and enjoyed many hours in the garden with him. Henning had a very dry sense of humour which provided great entertainment for the examining panel. He was pedantic about many things like using the correct apostrophe, justification, and border weightings on sketches. These are referred to as the 'Henningisms' and fondly joked about but still used today.

Henning was a true friend and will be sorely missed by the DBE Geography examining panel.

Farewell Henning - may your dear soul rest in peace.

*Tracy Magson, Rajendra Davechand, Mona Singh, Rajendra Packery, Keith Roberts, Clinton van der Merwe, Kamalan Nair and Jerome Meyer*

## Geological Time Ruler

Celia Sauerman and I are working with a colleague to produce a Geological Ruler for Southern African Teachers to use in the classroom. We are going to test it when we are on the Mpumalanga Field Conference. Some geological events which we are going to add to the scale:

- Vredefort Structure
- Gondwana
- Cape Fold Mountains

Already on the prototype is:  
Barberton Greenstone belt  
Natal granite and gneiss

Some thoughts:

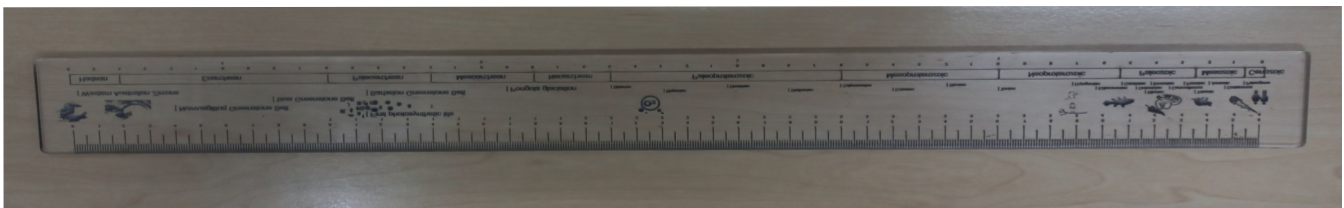
What else should be added?

Would this be better as a wooden ruler rather than plastic?

Would you order rulers for your department through the SAGTA online service?

Please contact Celia with your comments.

[celiageography@gmail.com](mailto:celiageography@gmail.com)



## NAPTOSA GEOGRAPHY CONFERENCE TO UMGENI VALLEY, WESSA 2007

The photograph we have included on this page (bottom) was taken at the NAPTOSA GEOGRAPHY TEACHERS' CONFERENCE in 2007. Chris Thorpe, Debbie Preston and I had put together the conference and this included a historical walk about of Howick, conducting old building surveys; and carrying out an urban decay analysis.

Some of these resources were used in our recent Berg to Beach Conference (2021) when we used QR codes to try and identify buildings in Howick.

The photograph was taken at the Pines picnic spot at Umgeni Valley. We do need help with the missing names (TBC)!

*Pam Esterhuysen*

### NAPTOSA CONFERENCE

10 October 2007

Front row (l to r)

*Chris Thorpe, Avril Pillans &*

*TBC.*

Back row (l to r)

*Dumisile Hlengwa TBC, Valerie Singaram & Ruth Clements.*

## A tribute to Christopher Thorpe

Another tall tree has fallen – Geographically speaking. Chris Thorpe was a passionate Geographer both in his career and in his life. He had a long career in education and made positive contributions to the community wherever he went. He was involved in classroom teaching, examination setting for both the Natal Education Department and the IEB and was a principal at several schools. He 'retired' to Howick and continued to teach Geography at the High School until 2014. His passion for this subject and the knowledge and experience that he gained over many years of leadership in education inspired many pupils.

After leaving the formal school setting, he continued to share his knowledge and expertise as a dedicated community member, facilitating a current affairs discussion forum, an amateur drama group and he sang in a choir amongst other interests. Chris was a

great conversationalist and a book lover and readily entertained an audience with his anecdotal stories.



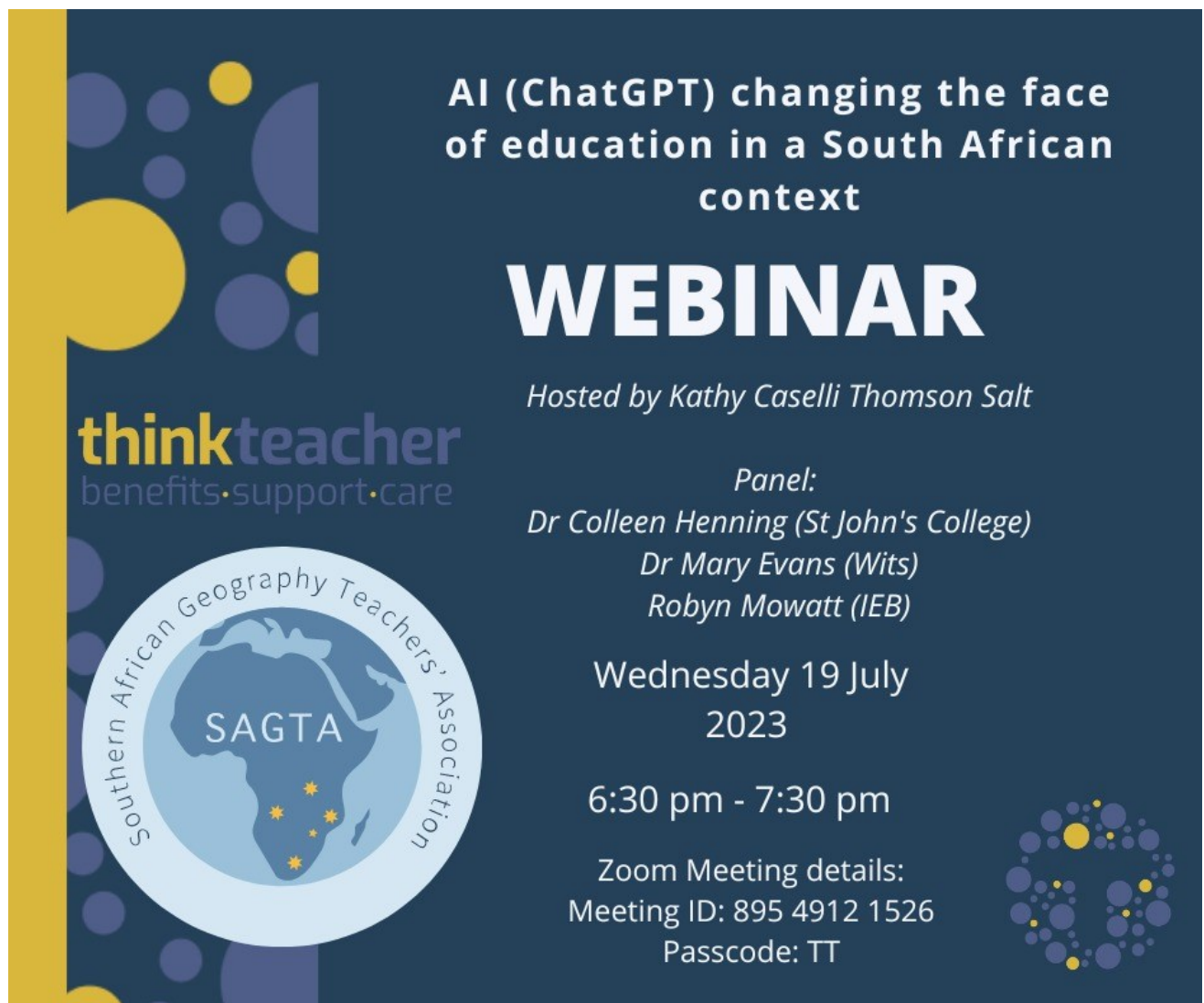
*Cynthia, Chris and Vivian at the Franschoek Conference 2014*

He will be fondly remembered by many, and our condolences are extended to his wife Vivian, his son and daughter and their families.

*Cynthia Dibben*



## SAGTA WEBINARS—What is in store for you this quarter?



AI (ChatGPT) changing the face of education in a South African context

# WEBINAR

*Hosted by Kathy Caselli Thomson Salt*

*Panel:*  
*Dr Colleen Henning (St John's College)*  
*Dr Mary Evans (Wits)*  
*Robyn Mowatt (IEB)*

Wednesday 19 July  
2023

6:30 pm - 7:30 pm

Zoom Meeting details:  
Meeting ID: 895 4912 1526  
Passcode: TT

thinkteacher  
benefits.support.care

SAGTA  
Southern African Geography Teachers' Association

\*Topic: TT SAGTA webinar: AI changing the face of education in a South African context\*  
Time: Jul 19, 2023 06:30 PM Harare, Pretoria

Join Zoom Meeting

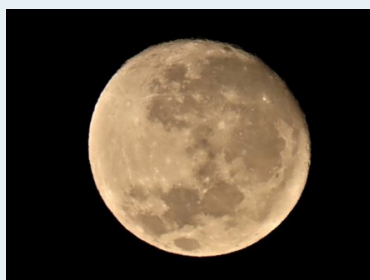
<https://us02web.zoom.us/j/89549121526?pwd=a3lBMWVlWE1lNk5qY1Jyd25sWVlBXQT09>

Meeting ID: 895 4912 1526  
Passcode: TT

## TIPS to encourage students to “Look Up”

Photographing the phases of the Moon, especially a full moon. Perhaps try and photograph the Supermoon on these dates: 3 July, 1 August, 31 August and 29 September 2023.

### Almost full moon 2 July 2023



### Full moon 3 July 2023 (Supermoon)



[Source: Theron, J 2023. Rosewood Estate, Pietermaritzburg]

## WEBINAR REVIEW

### Do Look Up! Webinar by Dr Tony Lelliott

22 June 2023

Some of the Apps and websites which are very useful in teaching this section.

- Stellarium 23.1 – download onto computer; open license
- Cellphone Apps: Planets
  - Private Universe
  - Star Mad 3-d
  - Sky Portal
  - Star Walk
- Watch Don't Look Up on Netflix!
- Space.com videos
- Globe at Night – An International Citizen-Science campaign to look at the impact of light in the skies
- NASA Science has a very good website for creative Astronomy <https://spaceplace.nasa.gov/menu/do/>

A most intriguing topic Dr Lelliott talked about is the growing problem of Light pollution. He mentioned how this is impacting on insect navigation, the migratory patterns of birds and ecosystems in general. Not to mention the loss of view of the night sky, the impact on melatonin synthesis in our bodies, and the waste of light energy!

Strangely the following article was referred in the AAG Smartbrief on the same day as the webinar:

### Light pollution poses serious threat to astronomy, skywatching and more, study says

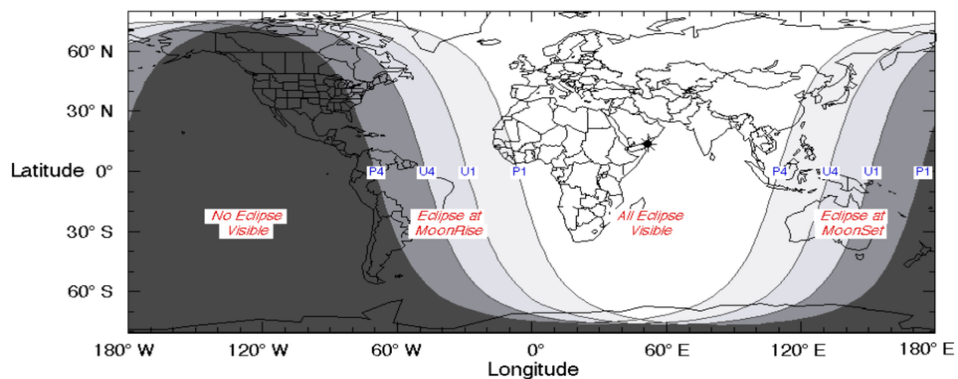
By Sharmila Kuthunur

[https://www.space.com/light-pollution-serious-threat-astronomy-skywatching?utm\\_term=49A91727-6A32-40DD-A7D1-5665B06FD708&utm\\_medium=email&utm\\_content=B482EC1B-D94E-45EA-8BCB-EA5D438157B1&utm\\_source=SmartBrief](https://www.space.com/light-pollution-serious-threat-astronomy-skywatching?utm_term=49A91727-6A32-40DD-A7D1-5665B06FD708&utm_medium=email&utm_content=B482EC1B-D94E-45EA-8BCB-EA5D438157B1&utm_source=SmartBrief)

Follow Sharmila Kuthunur on Twitter [@skuthunur](https://twitter.com/skuthunur). Follow us [@Spacedotcom](https://www.spacedotcom), or on [Facebook](https://www.facebook.com) and [Instagram](https://www.instagram.com).

Collect resources on the total lunar eclipse 28 October 2023 and encourage pupils to observe this.

[https://en.wikipedia.org/wiki/October\\_2023\\_lunar\\_eclipse](https://en.wikipedia.org/wiki/October_2023_lunar_eclipse)



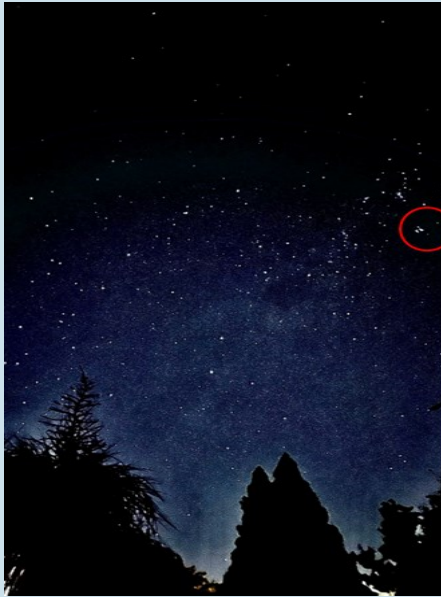


## Practical tips for creating an interest in astronomy, looking up at the skies and moon phase watching

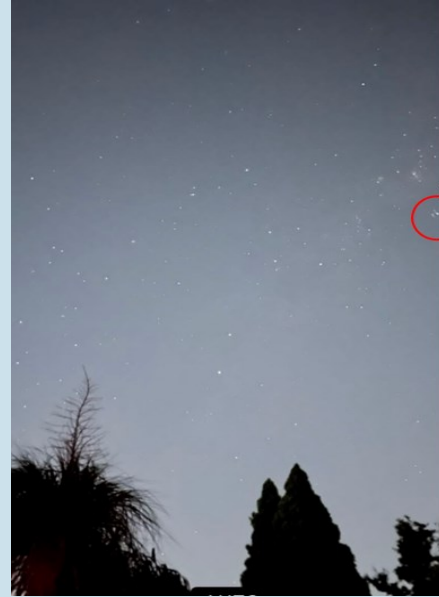
Dr Mary Evans

Mary gets her students to watch the sky and take photographs from the same spot over a period of time.

- 1 photo per week for one month from the same position: shows change over the **year**.
- use lowest “shutter speed” to allow maximum light in.



One week  
apart

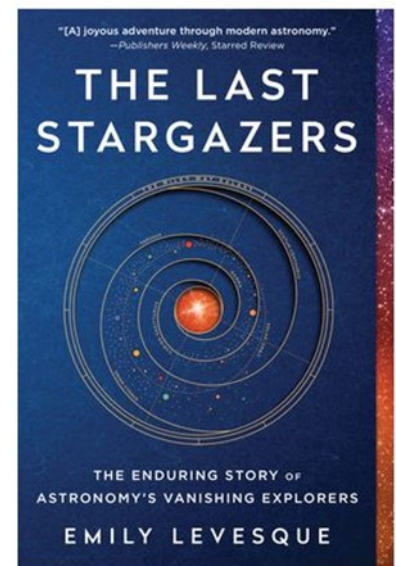


[Source: Evans, M 2023]

### Webinar Quiz

At Dr Lelliott’s recent SAGTA webinar, we launched a quiz. These are the five questions asked, with their answers. Competition was tough, with the only answer of contention being the title of the book prize. Congratulations to **Mandy Ladds** who is the worthy recipient of “The Last Stargazers”.

1	What is the sky referred to in Dr Lelliott's presentation?	A dome
2	What is the Title of the book prize for this quiz?	The Last Stargazers
3	How does Dr Lelliott suggest we get students to look at annual motion?	Use Stellarium Get the students to take photographs daily / weekly / monthly / from the same spot, looking into the sky. Use various apps. See suggested list.
4	Which planet is known as the evening star?	Venus
5	What is a supermoon?	When the moon is closest to the earth because it's elliptical orbit / the moon looks bigger and brighter as a result of this position. Use a low shutter speed for maximum light. Watch on the dates given.



## OTHER WEBINARS TO LOOK FORWARD TO

### AUGUST

#### IEB GRADE 12 THEMES:

Chromite

Gauteng

### SEPTEMBER

#### DBE GRADE 12 THEMES:

COEGA SDI

Wild Coast IDZ.

Maize farming

Platinum mining

## HOW TO WRITE AN ACADEMIC ARTICLE FOR JoGEA

Prof J Fitchett

## Journal of Geography Education for Africa (JoGEA) –

### Report for SAGTA June 2023 Newsletter

Fellow SAGTA members, as you know, JoGEA has appointed two new Editors-in-Chief: Professor Jasper Knight (a Physical Geographer who is a “geoscientist with research interests in the spatial and temporal variability in landscape system responses to climate and environmental changes during the late Pleistocene and Holocene, looking at sediments and geomorphology” specifically ([Wits Website, 2023](#))). Dr Mary Evans (a fellow SAGTA member) is the other EIC and hails from Wits too, she is “interested in all aspects of Climate Change - from measuring carbon in the atmosphere to growing sustainable food gardens; as well as being interested in luminescence dating of quartz-rich sediment and fired pottery using optically stimulated luminescence dating techniques” ([LinkedIn Profile, 2023](#)). We are very happy to have both of them at the helm of JoGEA and look forward to their leadership in growing the journal over the next three years.

As the Founding Editor of JoGEA, I will remain on the Editorial Board as an Honorary member; I am very pleased to announce that JoGEA is about to be indexed and hosted on the SciELO SA Platform, too (see: <https://scielo.org/en/>); **stay tuned for more exciting details.** To access the journal, visit the SAGTA website or go directly to this link: <https://upjournals.up.ac.za/index.php/jogea>. Please remember to submit your articles on Teaching Best Practices to JoGEA (a SAGTA webinar/workshop on how to do this will soon be hosted by SAGTA and include the guidance and expertise of Professor Jennifer Fitchett (also from Wits Geography)).

Yours in Geography Education  
Clinton D. van der Merwe, PhD  
Associate Professor (University of Pretoria)



## Geospatial Data Science Certificate

### Update on the Geospatial Data Science Certificate (GDSC)

#### Registration Update: GDSC 2023

The current number of students, teachers, and schools registered at the moment

Number of Schools: 15 Schools

Number of Teachers: 17

Number of Students: 156

The **General Participation Certificate 2023** to be completed between **12 June – 30 September 2023**

The **Advanced Certificate** is to be completed on one of the following days: **19; 20 or 21 October 2023.**

#### GENERAL PARTICIPATION CERTIFICATE TOP ACHIEVERS 2022

Crawford International Ruimsig

Curro Hermanus

Merrifield College

#### ADVANCED CERTIFICATE TOP ACHIEVERS 2022

Ashton International College Benoni

Our Lady of Lebanon – Maronite Catholic School

Trinityhouse Randpark Ridge

Radford House

#### TOP ACHIEVERS 2022

The top achievers' submissions will be exhibited at the ICC



31ST INTERNATIONAL

CARTOGRAPHIC CONFERENCE

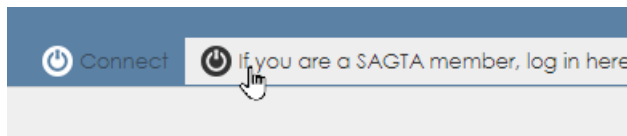
13 - 18 AUGUST 2023 | CAPE TOWN | SOUTH AFRICA

SMART CARTOGRAPHY FOR SUSTAINABLE DEVELOPMENT

# How to download a topographic map using the Map Downloader

Always make sure you use Chrome or Firefox as your browser to use the Map Downloader. Check that pop-ups are enabled.

1. Use the shortcut at the top of the SAGTA website ([www.sagta.org.za](http://www.sagta.org.za)) or click on <https://maps.sagta.org.za/>
2. Make sure you log in as a member of SAGTA at the top right hand corner to access the full offering of maps and orthophotos.

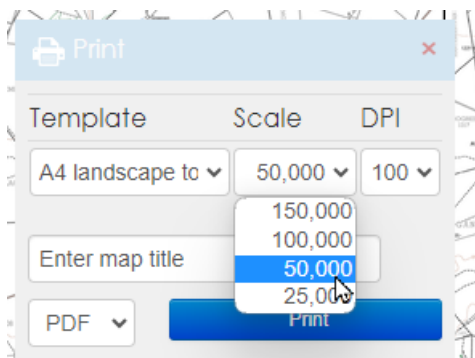


3. Once you have logged in, choose your map type and click on that. The tools you need to choose your map layer, elevation profile or measuring tool are on the left side of the screen.



4. Once you have searched for your town or city that you want, complete the 'Print' block at the top right hand side of the screen.

- 4.1 Remember to choose a scale of 1:50 000 for the topographic maps.

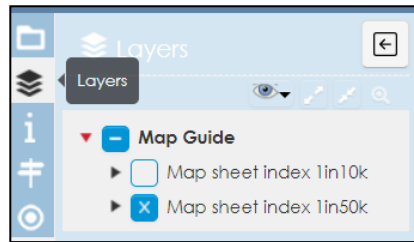


We also recommend you set the **DPI to 300**.

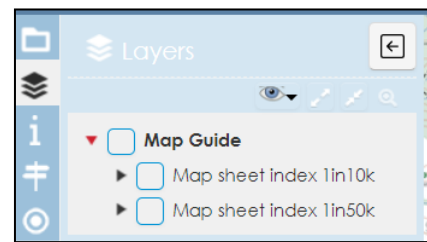
- 4.2 If you don't want the **MAP CODE** to appear on your map, go to the layers panel and click on it (i). Now **unclick the icon** (ii), to switch off the map code (iii).



(i)



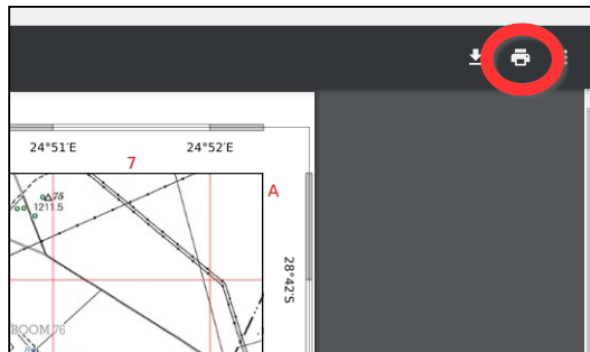
(ii)



(iii)

4.3 When you are happy that the red square for the map is in the correct place and the other details are correct on the Print block, click on the 'print' button once. Please wait while your map is being fetched and rendered. Once ready, it will **pop up in a new internet tab**.

4.3.1 From here you can download your topographic map onto your computer as a **PDF**. It is very important that you choose the 'print' icon and not the download icon.



4.3.2 When you choose the 'print icon' it will open a screen with options. Click on the down arrow next to 'Destination' and choose 'Save as PDF', or 'Microsoft print to PDF'. Both options will allow you to save the map to your computer in your chosen folder, with the naming you prefer.

**NOTES:**

\* Please remember that the magnetic declination shown on the downloaded topo map is the **current magnetic declination for 2023**.

We would appreciate that if you use the maps, you **credit** NGI for the **spatial content**, and **state** that the **map is generated by Kartoza/SAGTA Map Downloader** (see below).

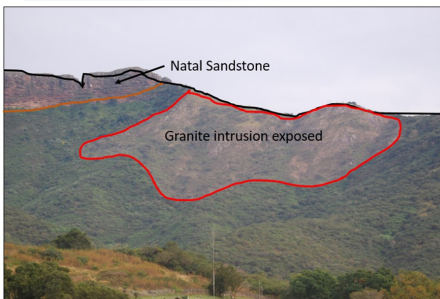
[Acknowledgements: Spatial content accessed from NGI; map generated by Kartoza/SAGTA Map Downloader]

## NAGLE DAM EXCURSION

3 June 2023

A group of SAGTA teachers in KZN spent an interesting morning with John Roff, exploring the basement granite and granitic gneiss, formed during mountain building on an ancient continent around 1000 million years ago. These exposures can be seen in the diversion weir cutting just before the dam.

On top of that lies the Natal group of sandstones, formed by the erosion of ancient mountains, and deposited around 500 million years ago. These rocks form the prominent Table Mountain feature. It's flat top was shaped by glacial action, and there is a thin layer of rocks of glacial origin covering the very top (dwyka tillite).



## SAGTA MPUMALANGA CONFERENCE 2023

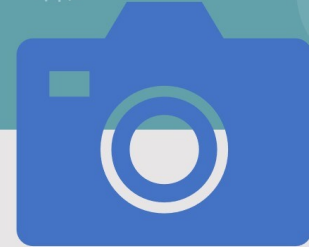
29 September to 3 October 2023

We are looking forward to a wonderful mindful experience!

Do follow the tour group on Facebook!

### Mpumalanga landscapes -photographic competition SAGTA Calendar 2024

- 15 September 2023 to 15 October 2023
- Submit your best TWO photographs.
- These will be posted on the website for voting.
- The BEST 13 photographs will be used for the calendar. A3 in size.
- Pre-ordering is important. This link will go out as the voting is taking place.



## AAG ANNUAL CONFERENCE: HONOLULU, HAWAII

April 16-20, 2024



Are you keen to join the **SAGTA Teacher Tour** to the AAG Annual Conference in Honolulu, Hawaii?

Proposed travel dates 13 - 27th April 2023 . We don't know conference costs yet. SAGTA members are members of the AAG so we do get a registration discount. Perhaps include your registration costs in your school budgets (estimated ~ R5 000)

Costs estimated at R48 000 (air flights and accommodation) (excluding conference costs).

If you are interested in joining the Party of Geographers (we need at least 10 to get group discounts), please indicate by using the following link:

<https://forms.gle/JtL9zT4DrY6UmQSC7>